



e-Update – April 29, 2009

Keeping You Informed

e-Update is a new communication tool developed to keep stakeholders aware of e-Health initiatives that involve service providers from across the Central East LHIN.

Health service providers are encouraged to share this *e-Update* with their boards, staff, physicians and volunteers.

To see more information on e-Health in the Central East LHIN, please visit www.centraleastlhin.on.ca and click on Resource Documents/Planning.

If you require additional information, please contact:

Karol Eskedjian
keskedjian@tsh.to
416-723-3843.

Sharing a Health Information System

CE LHIN is moving forward with the creation of a health information system that will be shared by all nine of our hospitals. The work, which began in February, is currently focused on the Meditech 6.0 Consolidation.

Advantages of sharing a health information system are numerous. There can be common business processes, shared workflow, a collective approach to clinical transformation, enhanced chronic disease management, seamless movement of patients and clients among hospitals, integration between primary care physicians and hospitals, improved reporting capabilities, and superior information management.

Completion of the Meditech 6.0 Consolidation will also help us achieve the province's goal of an electronic health record for all Ontario residents and enable the implementation of the CE LHIN's four e-health strategies:

- Give patients/clients options to improve self care
- Support health care providers across the continuum of care
- Build the electronic health record across the continuum of care
- Standardize and integrate systems inside and outside the LHIN

MEDITECH 6.0 CONSOLIDATION

Standards Teams

Whitby Mental Health Centre will be the first hospital to "go live" with Meditech 6.0. To accommodate the implementation, we purchased several Meditech 6.0 modules. Each module caters to a different area of our operations; some are non-clinical and some are clinical. In preparation for implementation, each module is assigned a Standards Team made up of representatives from the CE LHIN hospital partners. Team members have expertise in the module "topic" and work with a facilitator to decide how module data will be defined; coded and entered. When appropriate, teams also make recommendations to improve business processes and workflow.

Whitby's Meditech 6.0 implementation is scheduled into two phases. Phase I standards teams, with the exception of PHA (pharmacy), are focused on non-clinical modules. These non-clinical modules and PHA form the core or backbone of the MEDITECH 6.0 Consolidation. When they are complete, the core modules will be the foundation upon which clinical modules are developed in phase 2.

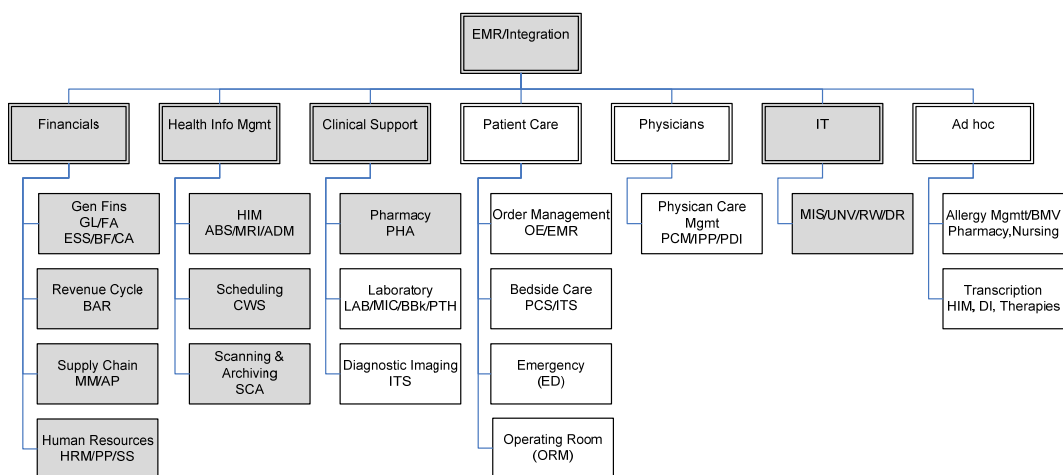
Engaged Communities.
Healthy Communities.

Governance

Overseeing the Meditech 6.0 Consolidation is the Central East Executive Council, (CEEC), which is made up of the CEOs from the 9 hospitals, the LHIN, and the Central East Community Care Access Centre. Reporting to that group is a governance oversight committee which is still being developed and an Advisory Group made up of senior information technology (IT) and informatics staff from the nine CE LHIN hospitals. This group, which will eventually be replaced by a steering committee, is accountable for the success of the Meditech 6.0 Consolidation.

Two committees report to the Advisory Group: The HIS/EMR (Electronic Medical Record) Integration team and the Oversight and Arbitration Committee. The HIS/EMR Integration team is responsible for approving decisions made by the Standards teams. The Oversight and Arbitration Committee finds solutions when teams have difficulty reaching decisions.

MEDITECH 6.0 CONSOLIDATION ORGANIZATION CHART



Improving Patient Care and Working Smarter

Advanced Clinical Day Overview

On March 23, Whitby Mental Health Centre's clinicians, managers and information technology staff gathered to learn about Meditech's 6.0 Advanced Clinical modules.

Lewis Hooper, Chief Information Officer for the CE LHIN, and representatives from Meditech explained how Meditech modules enhance patient care and simplify the clinicians work process. Presenters also outlined the steps required to plan and implement the clinical modules.

Whitby Mental Health Centre will be the first CE LHIN hospital to "go live" with Meditech 6.0 in the fall.



Advanced Clinical Day in Whitby.

The Advanced Clinical orientation was videotaped and copies have been distributed to each hospital Health Information System (HIS) Project liaison.

Clinicians Get Technical



Alison Mahony, Clinical Informatics Lead at Peterborough Regional Health Centre is coordinating the development of the CE LHIN Clinical Informatics Advisory Group. "Until recently," Alison Mahoney says, "most e-Health strategy work and initiatives tended to be IT driven. Our technical staff has done an amazing job setting the foundation, and now we are looking to build on their work by getting more clinicians involved with our e-Health initiatives."

Alison organized a meeting, on April 2, of Vice Presidents, Chief Nursing Executives, analysts, informatics specialists and clinicians from across CE LHIN. The meeting, facilitated by Lynn Nagle, a Senior Nursing Advisor for Canada Health Infoway, was an opportunity to brainstorm and explore the potential for more clinician involvement in e-Health. The result was unanimous support for a CE LHIN Clinical

Informatics Advisory Group which will likely work under the direction of the CE LHIN e-Health Steering Committee and the CE LHIN Chief Nursing Executive.

In addition to discussing informatics, meeting participants touched on a variety of other topics including:

- The value in an e-literacy assessment for the purpose of understanding and working effectively within environments where e-Health initiatives will be implemented
- The Provincial e-Health strategy, the CE LHIN e-Health strategy and the current Meditech 6.0 Consolidation Plan

The group will meet again in May to discuss outcomes of the April 2 meeting, begin formal development of a Clinical Informatics Advisory Committee, and determine a process for standardizing electronic documentation across all CE LHIN hospitals.

Get To Know Your Teams

Health Information Management (HIM) Standards Team

The Health Information Management (HIM) Standards Team is developing standards for the Admitting (ADM), Medical Records (MRI), Abstracting (ABS), Scanning and Archiving (SCA), and Risk Management modules. After Meditech 6.0 is implemented, the team will continue to meet. At that time their focus will be on maintaining and adjusting modules when required.

Sandra Beatty	Manager, Health Records/ Admitting
Kellie Churko	Manager, HIM & Chief Privacy Officer
Ralda Pearce	Applications Consultant
Colleen Howson	Manager, Admitting and Discharge Planning
Jody McKie	Manager, Health Records
Donna Nicholls	Applications Analyst
Anne Cox	Applications Integration Specialist
Shelley Miles	Applications and Project Manager
Robin Honey	Applications Analyst
Bryan Tiongson	Applications Analyst
Anne Milliken	Director, Data Integration

Northumberland is represented by Peterborough Regional Health Centre

Campbellford
Haliburton Highlands
Lakeridge Health
Peterborough Regional Health Centre
Peterborough Regional Health Centre
Peterborough Regional Health Centre
Ross Memorial
Ross Memorial
Rouge Valley Health
The Scarborough
Whitby Mental Health

General Ledger/Fixed Assets (GL/FA) Standards Team



GL/FA Standards Teams

The GL/FA (General Ledger/Fixed Assets) team has been meeting for almost a month. They get together two days a week and will continue to meet up until the end of May.

They have already been to Boston for training at Meditech headquarters.

Louise Grosjean	Director, IT	Campbellford
David Jewel	System Analyst	Peterborough Regional Health
Richard Scheel	Director, Planning & Treasury	Rouge Valley
Rolita Cheung	Manager, General Accounting	The Scarborough
Naseera Jiwa	Application Analyst	The Scarborough
Ricardo Thomas	Business Analyst	Whitby Mental Health
Tracy Lawther	Senior Business Analyst	Whitby Mental Health
Margaret O'Dell	Director, Finance	Whitby Mental Health
Craig McKee	Financial Analyst	Lakeridge Health
Diane Dirsus	Director, Finance	The Scarborough
Shelley Miles	Manager, IT	Ross Memorial
Nancy Byrne	Finance Application Specialist	Ross Memorial

Materials Management and Accounts Payable (MMAP) Standards Team

The Materials Management and the Accounts Payable (MMAP) modules Standards Team will begin working the first week of May. Although some hospitals have opted out of using the Meditech 6.0 Materials Management Module - since they are already using other applications - each hospital will have some involvement in the Standards Team discussions. Keeping all hospitals aware of Materials Management Module discussions and decisions will ensure that relationships between hospitals are maintained and new processes are relevant to each facility.

Cathy Outram	CFO	Halliburton Highlands
Cheryl Lynn Robertson	Application Consultant	Lakeridge' Health
Amulya Vemula	Applications Analyst	Peterborough Regional Health
Donovan Du Quesnay	Manager MIS Business	Rouge Valley Health
Lisa Janes	Application Analyst for Pharmacy	Rouge Valley Health
Nancy Byrne	Financial Application Specialist	Ross Memorial
Margaret O'Dell	Finance Manager	Whitby Mental Health
Gord Bryden	Purchasing Officer	Whitby Mental Health
Alex Khan	Manager, Nutrition & Food Services, Transp. & Stores	Whitby Mental Health
Ricardo Thomas	Business Analyst	Whitby Mental Health
Nander Stevens	Clinical Analyst	Whitby Mental Health
Naseera Jiwa	Application Analyst	Scarborough
Jackie Harkness	Purchasing	Whitby Mental Health

Upcoming Events

April 27- May 1	Billing/Accounts Receivable (BAR) Dictionary Training in Boston
April 29 - 30	Patient Scheduling (CWS) Orientation and Assessment
May 14	CE LHIN Symposium: Meditech 6.0 -Advanced Clinical Demonstration
May 19 - 22	Pharmacy Dictionary Training in Boston

Meditech 6.0 Consolidation at a Glance

