



The IHSP and Achieving our Strategic Aims

Presentation Central East LHIN Board of Directors

October 20, 2009

Engaged Communities.
Healthy Communities.

Objective

Obtain Board approval for the
2010-13 Integrated Health Service Plan

Engaged Communities.
Healthy Communities.

Background

- The IHSP is a board approved plan required by *LHSIA*.
- The IHSP is to be made available to the public no later than November 30, 2009
- In its stewardship role, the Ministry of Health and Long-Term Care has required LHIN IHSP's to account for:
 - ED Demand & Wait Times
 - ALC and Hospital Bed Utilization
 - Diabetes
- To promote consistency, the MOHLTC and the LHINs established a roadmap for IHSP development and the document itself.

IHSP Framework Requirements

IHSP Element	Met or Not Met
Introduction	✓
Summary of MOHLTC Vision and Strategic Directions	✓
CE LHIN Vision for the Local Health System	✓
Overview of the current health system and LHIN area	✓
Framework for Planning	✓
CE LHIN strategic aims	✓
Rationale for CE LHIN strategic aims	✓
How will the strategic aims be measured & achieved	✓
Conclusion	✓
OVERALL Requirements for IHSP	✓

Background: Previous Board Approvals

All the elements of the 2010-2013 have been previously approved or endorsed by the Central East LHIN Board.

Engaged Communities.
Healthy Communities.

IHSP and Previous Board Approval & Endorsement

IHSP Element	Approved	Endorsed
CE LHIN Vision for the Local Health System		
<i>Board approved Vision Statement, Strategic Directions and OHQC elements</i>	✓	
Framework for Planning		
<i>Clinical Services Plan, Framework for Community Engagement, eHealth Strat Plan, IHI - Triple Aim</i>	✓	
CE LHIN strategic aims		
<i>Two Strategic Aims</i>		✓
How will the strategic aims be measured & achieved		
<i>Annual Business Plan, ED Pay for Results, Priority Projects, Aging at Home</i>	✓	

Healthy Communities.

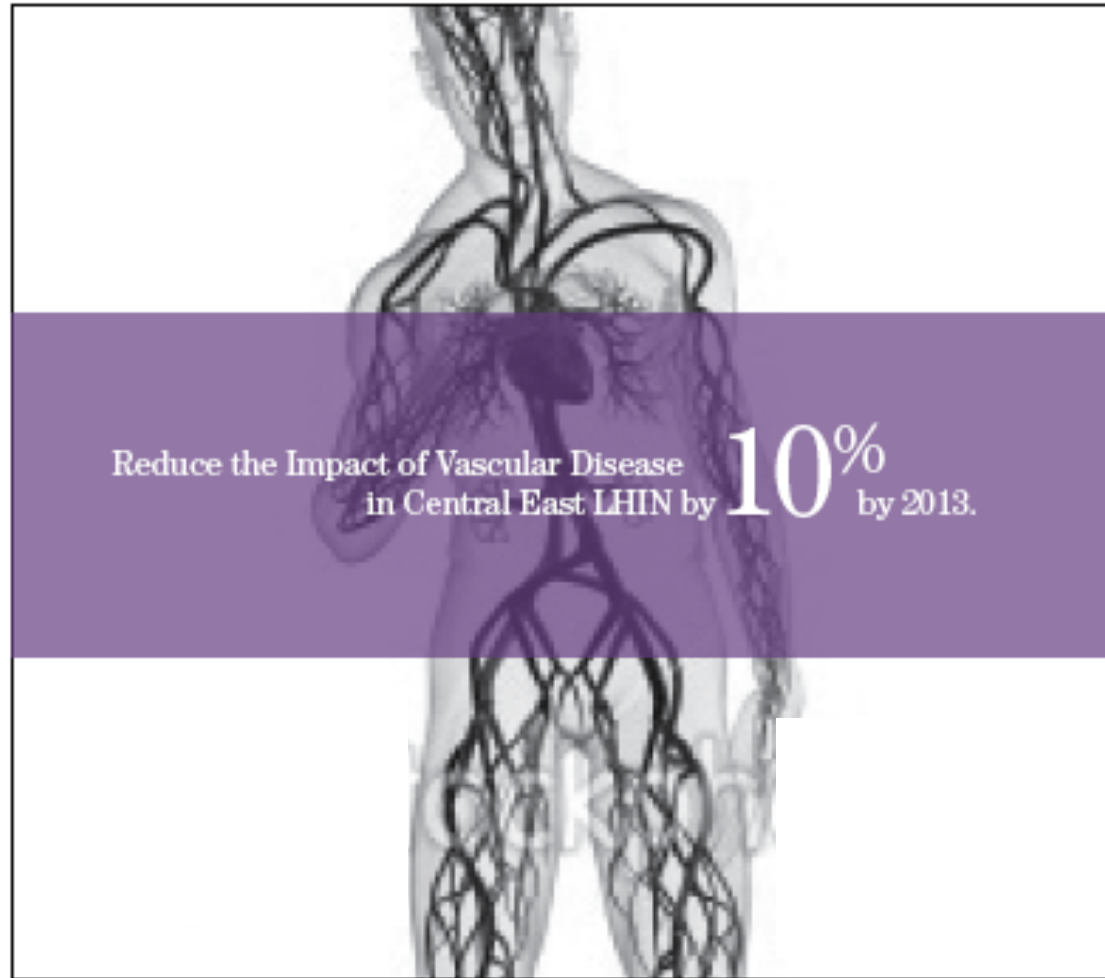
Strategic Aims

Strategic Aims support MOHLTC priorities within a Central East LHIN context and strategic framework (e.g., Triple Aim).

Engaged Communities.
Healthy Communities.



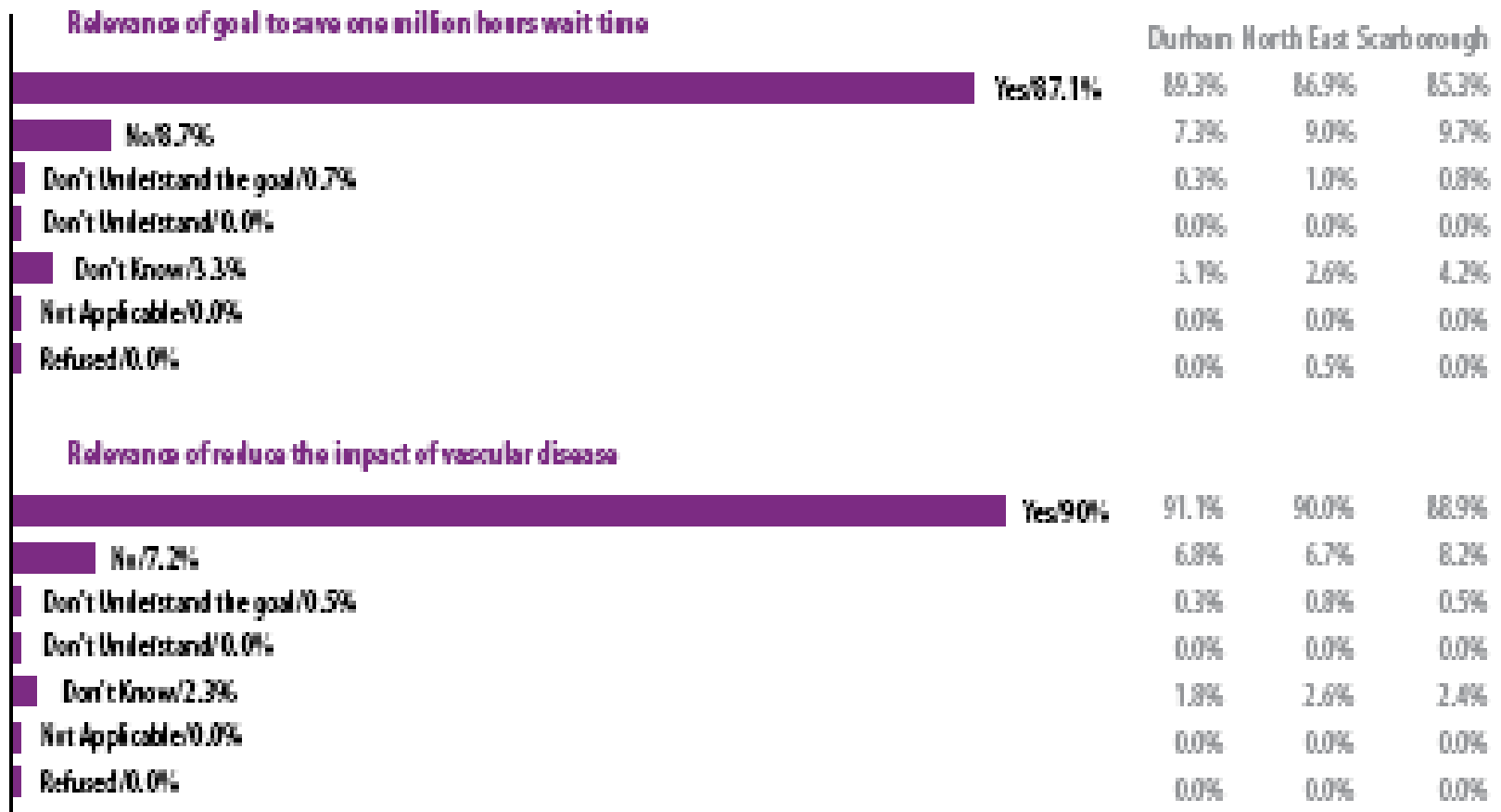
Engaged Communities.
Healthy Communities.



Reduce the Impact of Vascular Disease
in Central East LHIN by **10%** by 2013.

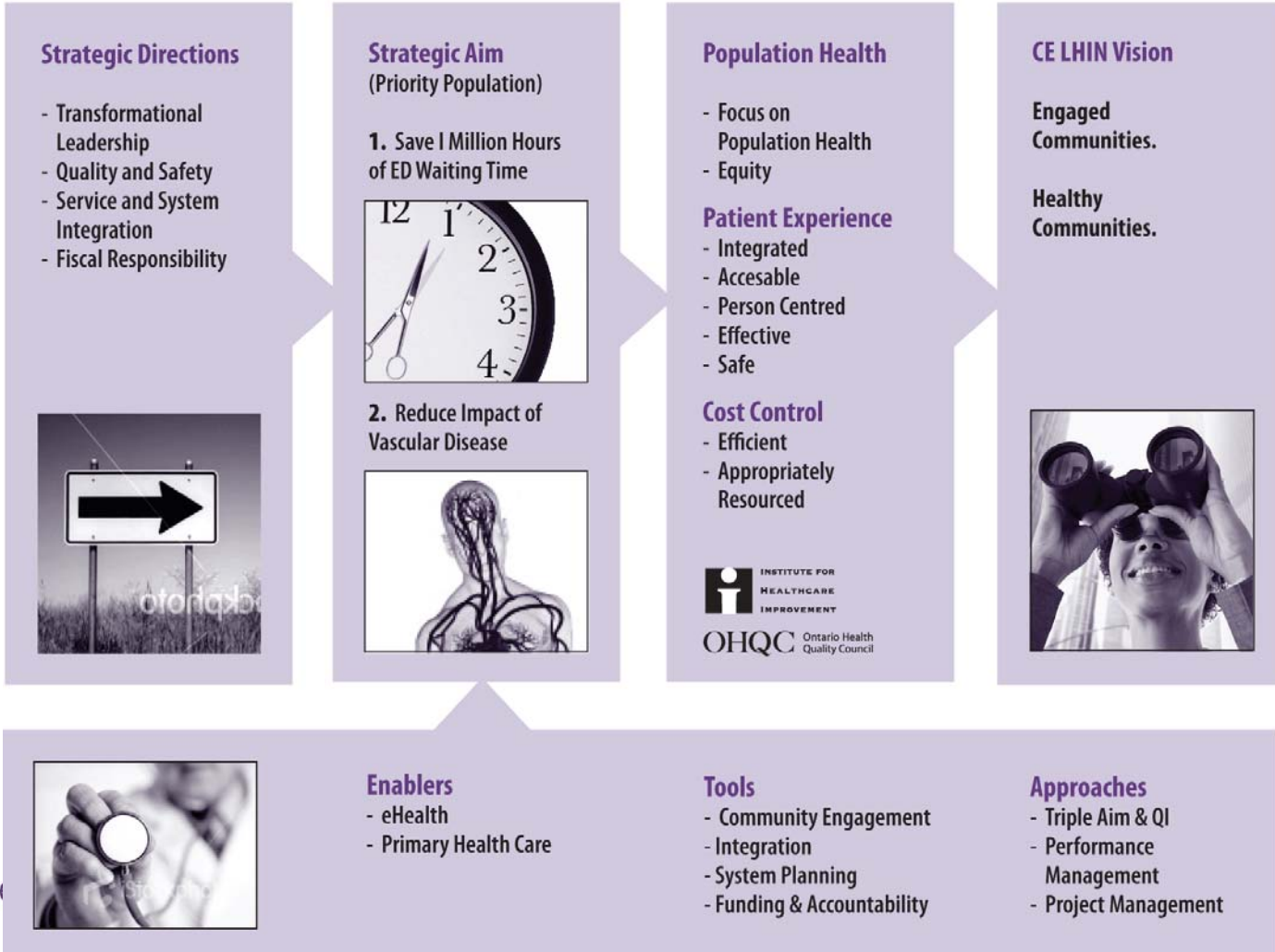
Engaged Communities.
Healthy Communities.

Relevance of LHIN Goals



Engaged Communities.
Healthy Communities.

The 2010-2013 Strategy Map



Engage

Motion

The Central East LHIN Board of Directors approves the 2010-2013 Integrated Health Service Plan.

The Integrated Health Service Plan shall be made available to the public on November 30, 2009.

In accordance with the *Local Health System Integration Act*, health service providers within the Central East Local Health Integration Network shall align their strategic and operational activities in order to support the vision, directions and aims of the 2010-13 Integrated Health Service Plan.