


MLPA 2010-12 The Next Step in System Transformation

Central East LHIN
Board of Directors Meeting
May 18, 2010





Agenda

- MLPA What's it all about
 - Development
 - Goals
 - Principles
 - Content
 - Performance Indicators 2010-2012
 - Discussion and Questions
 - Board Approval
- 

Ministry LHIN Performance Agreement (MLPA) 2010/12

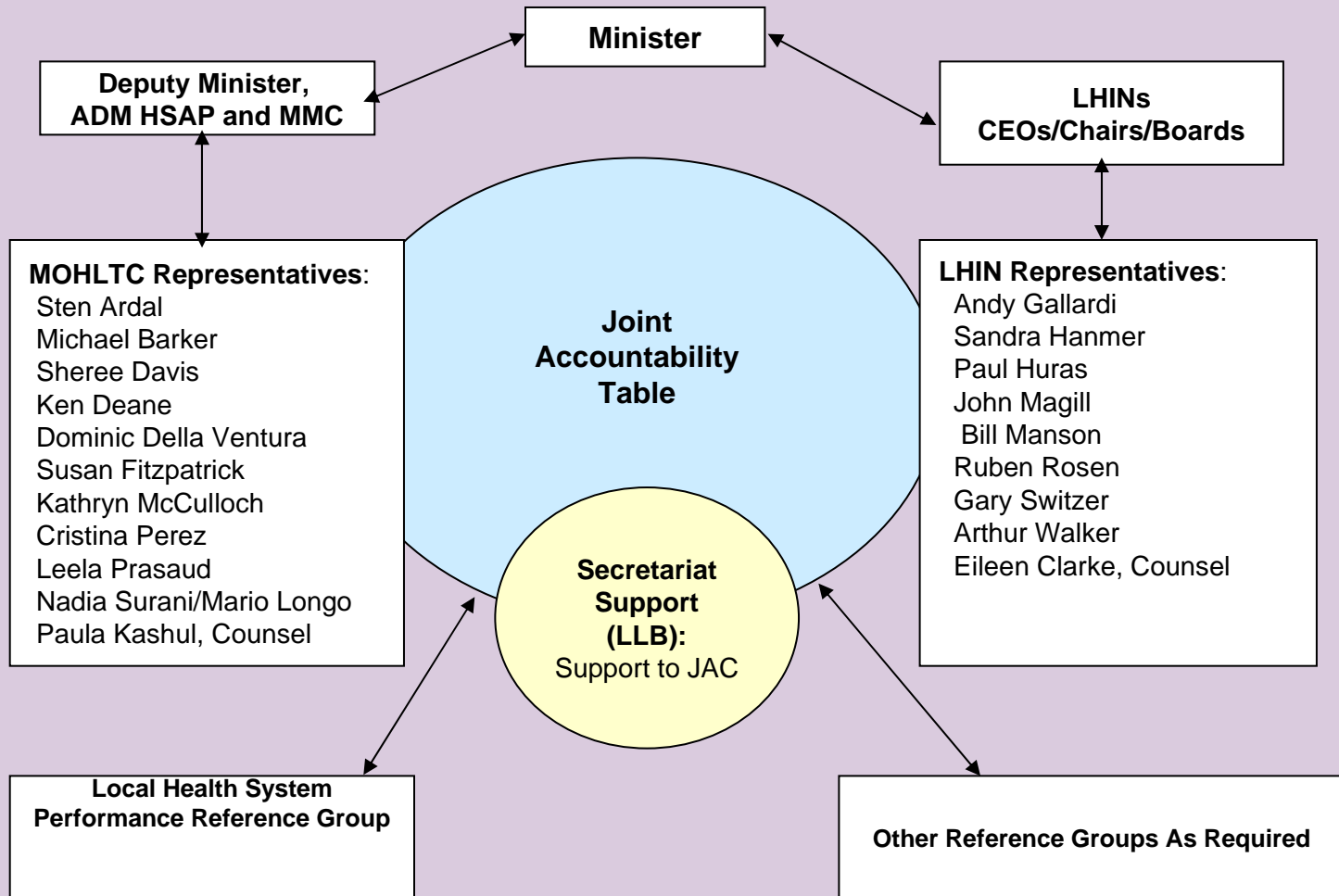
- What is it?
 - A representation in the evolution of the Ministry LHIN Relationship
 - A new two year accountability agreement replacing the now complete MLAA 07-10
 - A performance agreement focusing on System Performance and Financial Accountabilities
 - A description of the obligations for the Ministry and LHINs individually and jointly

MLPA 10 -12

What will it do?

- Reflect local priorities as developed through the Integrated Health Services Plans
- Reflect the government's agenda and priorities
- Reflect that Ontario is one system with 14 local networks working as a together to facilitate coordination of care delivery among the regions
- Drive performance
- Drive consistency and cohesion across the 14 LHINs
- Focus on care integration of the individual's experience as the individual moves through the continuum of care

MLPA Team Structure



MLPA 10-12

- Goals for the MLPA 10-12:
 - performance-focused
 - streamlined
 - simplified containing minimum specifications
 - lower administrative burden

MLPA 10 -12

Principles

- Strategic Alignment with Government Priorities
- Consistency
- Performance Improvement
- Flexibility
- Openness and Transparency
- Innovation and Creativity
- Sustainability of the healthcare system through sound financial management
- Achievability
- Quality Person-Centered Care

Areas of Change MLAA to MLPA

Agreement Components

Component	MLAA Title		MLPA Title
Primary Agreement	✓		✓
Schedule 1	General		General
Schedule 2	Community Engagement, Planning and Integration	Included in Schedule 1	Local Health System Program Management
Schedule 3	Local Health System Management	Included in Schedule 2	Funding and Allocations
Schedule 4	Information Management Supports	Included in Schedule 1	Local Health System Performance
Schedule 5	Financial Management	Included in Schedule 3	Integrated Reporting
Schedule 6	Financial Processing Protocols	Deleted	_____
Schedule 7	Local Health System Compliance Protocols	Included in Schedule 1	_____

Agreement Components

Component	MLAA Title		MLPA Title
Schedule 8	Integrated Reporting	Included in Schedule 5	_____
Schedule 9	Allocations	Included in Schedule 3	_____
Schedule 10	Local Health System Performance	Included in Schedule 4	_____
Schedule 11	E- Health	Included in Schedule 1	_____

MLPA 2010 -12

Primary Agreement

Components

- Introduction
- Purpose of agreement
- Principles
- Definitions
- Accountability of LHINs and Ministry
- Performance Improvement
- Next Agreement

Schedule 1 – General

Purpose:

To set out general obligations for the MOHLTC and LHIN's with respect to their roles and responsibilities

Components

- Government Priorities and Provincial Strategies
- Consistency
- System Coordination
- Community Engagement
- Information Management
- Compliance Protocols

Schedule 1 – General

Components (cont'd)

- eHealth
- Capital
- HIRF
- Emergency Management
- General Performance Obligations
- Annual Review and Update

Schedule 2 – Local Health System Management

Purpose:

To identify the MOHLTC and LHIN's decision-making and responsibility in managing the local health system for specific programs

Components

- **Provincial Programs**
- **LTC Homes**
 - Per Diem Funding
 - Construction Funding Subsidy
 - Assignment of LTC Service Agreements
 - Beds in Abeyance
 - Short Stay/Respite
 - Convalescent Care Beds
 - Interim Beds
 - MOHLTC Managed LTCH Programs

Schedule 2 – Local Health System Management

Components (cont'd)

- **Community Health Centres**
 - Dedicated Funding Envelope
- **Community Mental Health**
 - Dedicated Funding Envelopes
- **Addictions**
 - Dedicated Funding Envelopes
- **Community Care Access Centres**
 - Dedicated Funding Envelopes
- **Compensation under Specified Initiatives/Agreements**
 - Dedicated Funding Envelopes
- **MOHLTC Managed Programs**
 - General Comments

Schedule 3 – Funding and Allocations

Purpose:

To provide a statement of the total funding to be allocated to the LHIN for the 2010/11 fiscal year and if available funding targets for out years

Components

- Definitions
- Performance Obligations
- Annual Balanced Budget Requirements
- Financial Management Policies and Guidelines
- Accounting Standards

Schedule 3 – Funding and Allocations

Tables

- Table 1: Statement of Total LHIN 2010/11 Funding Allocations
- Table 1a: Statement of Total LHIN 2010/11 Funding Allocations – Operating Budget
- Table 1b: Statement of Total LHIN 2010/11 Funding Allocations – Capital Budget
- Table 2: Statement of CE LHIN 2010/11 Funding Allocations
- Table 2a: Statement of CE LHIN 2010/11 Funding Allocations – Operating Budget
- Table 2b: Statement of CE LHIN 2010/11 Funding Allocations- Capital Budget
- Table 3: Statement of Total 2010/11 Dedicated Funding by Sector
- Table 4: Dedicated Funding by sector for CE LHIN

Schedule 4 – Local Health System Performance

Purpose:

To set out performance indicators for the local health system to improve local health system performance and support the achievement of provincial targets

Components

- Definitions
- General Obligations
- List and table of Performance Indicators

Schedule 5 – Integrated Reporting

Purpose:

To summarize in one schedule, all the reporting obligations of the MOHLTC and the LHIN under the Agreement including Schedules

Components:

- General Obligations
- Table containing due dates and description of requirements
- Reflects Stocktake Report for Performance
- Reflects Quarterly Financial Reporting
- Reflects LHIN level reporting on government priorities

MLPA 2010 -12 Proposed Indicators

MLPA Indicators

Criteria for considering proposals for performance obligations included:

- Outcome- and value-focused
- Achievable within available resources
- Clear, simple, easily understood
- Linked to transformation goal (e.g. purpose of Act) and key interests – government priorities

MLPA 2010-12 Indicators*

1. Proportion of Emergency Room (ER) Patients Admitted Within 8 hours ;
2. Proportion of Non-admitted Complex (CTAS I-III) ER Patients Treated Within 8 hours;
3. Proportion of Non-admitted Minor Uncomplicated (CTAS IV-V) ER Patients Treated Within 4 hours;
4. 90th percentile Number of Days from Alternate Level of Care (ALC) Designation to Discharge from Acute Care;
5. Repeat Unplanned ER Visits within 30 Days for selected Mental Health Conditions;
6. Repeat Unplanned ER Visits within 30 Days for selected Substance Abuse Conditions;
7. 90th Percentile Wait Time from Hospital to Community Home Care Services (from Application to First Service);
8. 90th Percentile Wait Time from Community Setting to Community Home Care Services (from Application to First service); and
9. Readmission within 30 Days for Selected CMGs.
10. 90th Percentile Wait Times for Cancer Surgery;
11. 90th Percentile Wait Times for Cardiac By-Pass Procedures;
12. 90th Percentile Wait Times for Cataract Surgery;
13. 90th Percentile Wait Times for Hip Replacement;
14. 90th Percentile Wait Times for Knee Replacement
15. 90th Percentile Wait Times for Diagnostic MRI Scan;
16. 90th Percentile Wait Times for Diagnostic CT Scan

*indicators still being finalized. A technical document will be available once the indicators are complete

MLPA 10-12 Next Steps

- Indicator work and definitions to be finished at
- Technical Briefing on Indicators to be provided in early May
- Provincial budget process to be finished May/early June
- **LHIN Board meetings in April/May for approval in principle of MLPA**
- **Individual LHIN-MOHLTC meetings to set performance targets will occur in May**
- Approval of MLPA targets and allocations by June 30, 2010 by MOHLTC and all LHINs

Discussion and Questions

Motion

BE IT RESOLVED THAT

- The draft the Ministry-LHIN Performance Agreement template for April 1, 2010 to March 31, 2012, including the accompanying schedules, a copy of which is appended to these minutes, is approved in principle.

AND

- THAT the Board Chair and CEO be authorized to execute the Ministry-LHIN Performance Agreement for April 1, 2010 to March 31, 2012 on behalf of the Central East LHIN, provided that the execution copy of the Ministry-LHIN Performance Agreement for April 1, 2010 to March 31, 2012 is substantially similar to the approved draft.